

## GX 12 12M series

Using the environment conditions

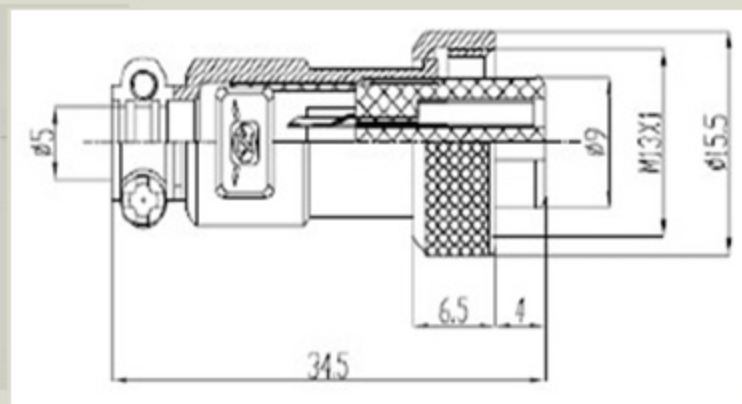
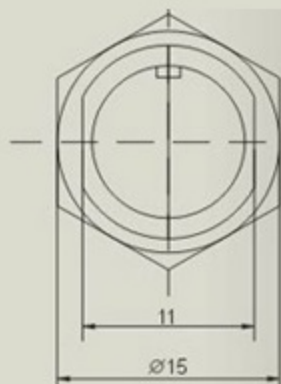
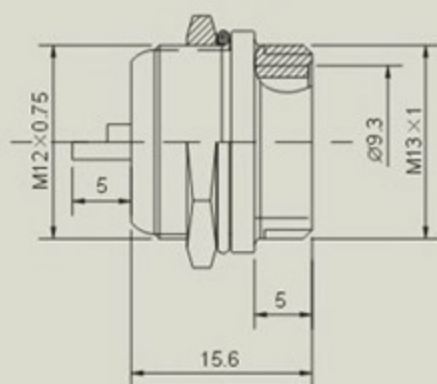
Ambient temperature:  $-50 \sim +70 \text{ }^{\circ}\text{C}$

Relative humidity: the temperature is  $+40 \text{ }^{\circ}\text{C}$  can reach 98%, atmospheric pressure of 4, 4 kpa

Vibration, vibration frequency for  $10 \sim 100 \text{ Hz}$ , the acceleration of  $100 \text{ m/s}^2$ : frequency is  $60 \sim 80$  times/min, up to  $250 \text{ m/s}^2$  centrifugal acceleration: acceleration of  $250 \text{ m/s}^2$

Temperature: when the rated load, the contact of temperature rise should be not more than  $+50 \text{ }^{\circ}\text{C}$  ambient temperatures

Life: 500 should not appear harmful connector plug mechanical and waterproof performance rating: at least IP55



Shell size	GX12-2	GX12-3	GX12-4	GX12-5	GX12-6
Contact Arrangements Comply with the needle direction					
Rated current/voltage	7A-125V	7A-125V	5A-125V	5A-125V	5A-125V
Operatin limit voltage(AC, V,rms)	200	200	200	200	200
Withstanding voltage (AC, V,rms)1minute	1500	1500	1500	1500	1500
Insulation resistance(MΩ MIX.) At DC 500V	2000	2000	2000	2000	2000
Contact resistance(MΩ MIX.) AT DC 1A	3	3	3	3	3
Soldre inter diameter φ (mm)	1.2	1.2	1.2	1.2	1.2